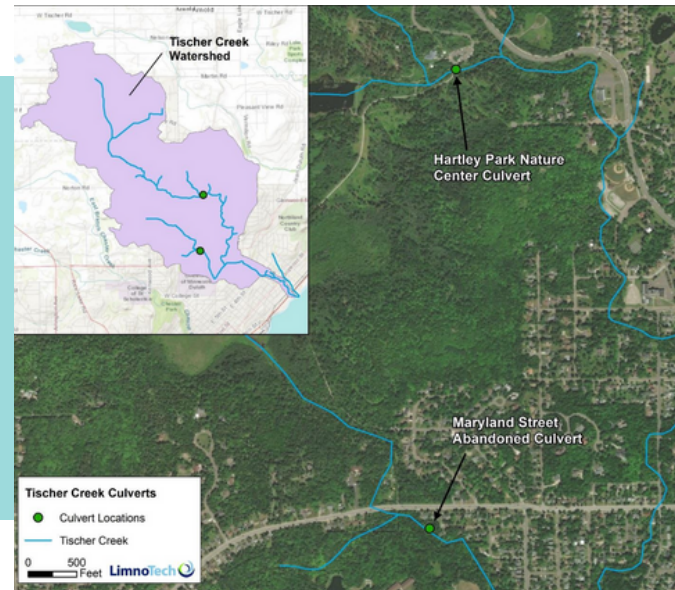


TISCHER CREEK FISH HABITAT RECONNECTION

The Tischer Creek Culvert Replacement Project focuses on habitat restoration, culvert replacement, and fish species enhancement within the Sawmill Creek watershed in Minnesota



Project site location

PROJECT HIGHLIGHTS

Restore habitat connectivity for brook trout (indicator species) and other spawning fish by replacing culverts and reconnecting eight stream miles

Improve sediment transport through crossings



Brook trout

DESIGN FEATURES

Culvert replacements designed to follow proper geomorphic principles, ensuring natural stream characteristics and optimal fish passage

Native seed mix and erosion control measures employed for post-construction restoration, ensuring proper plant establishment and preventing invasive species.

Check out this
QR Code for the
full report!



ENVIRONMENTAL BENEFITS

Create fish and wildlife habitat
Prevent stream bank erosion

ECONOMIC BENEFITS

Enhance tourism & recreational activities
Flood control & infrastructure savings

COMMUNITY BENEFITS

Stakeholder engagement and inclusive access

FUNDING & PARTNERS

Funding for this project provided by
Great Lakes Restoration Initiative
(GLRI)

Project Partners



Design Team

